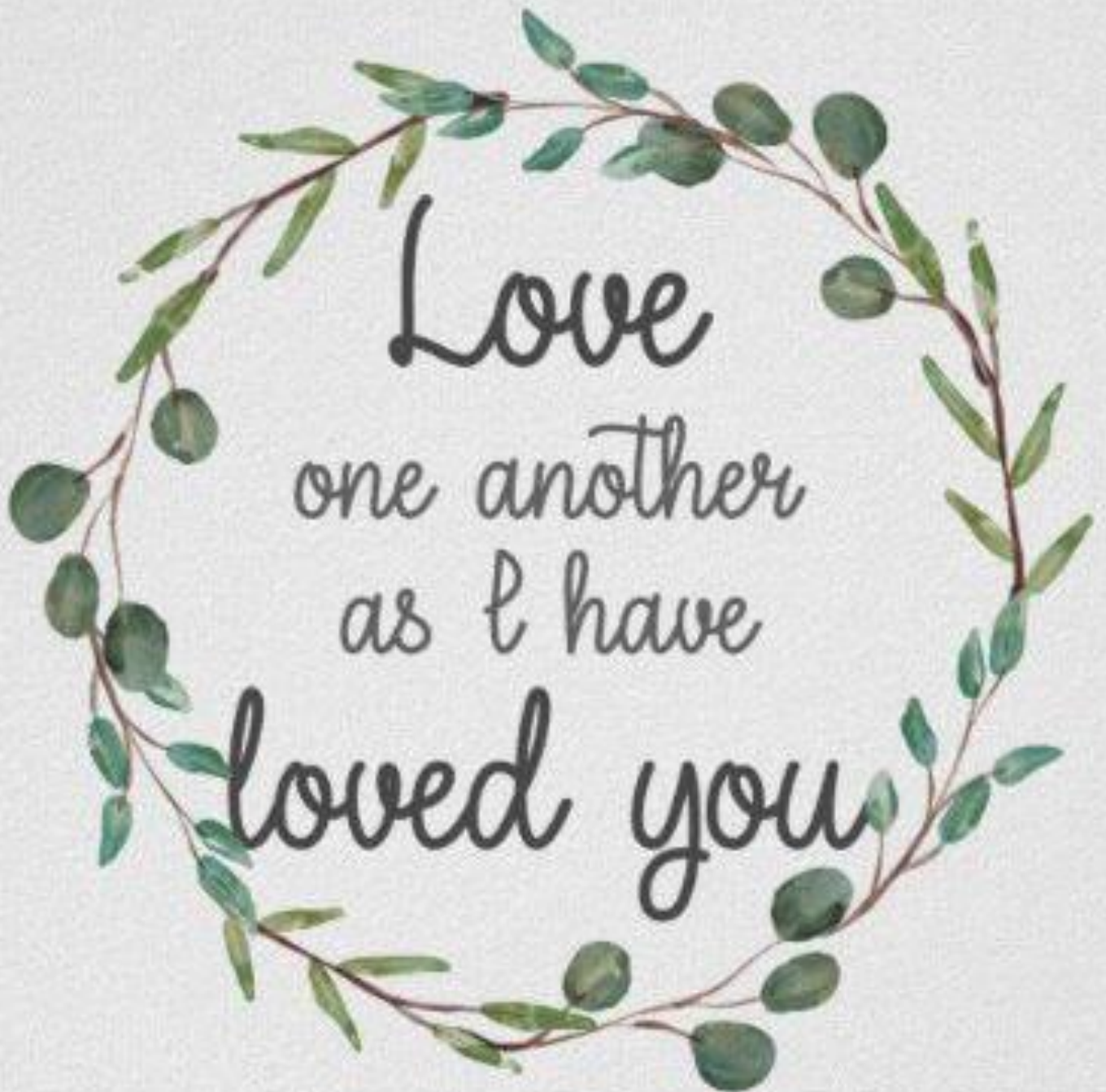


Ad Glynde



JOHN 13:34

Spring 2022

Glynde Lutheran Church

CHURCH DETAILS...

15-17 Glynburn Road,
Glynde, SA, 5070
Office Hours:
Wed—Fri 9 am—1 pm

Website:
www.glyndechurch.org

Facebook:
Glynde Lutheran Church

CHURCH CONTACTS...

Pastor

Wayne Boehm
Ph: 8365 3033
Email:
wayne@glyndechurch.org

Cross-Cultural Coordinator

Sharyn Schubert
Ph: 8365 3033
Email:
sharyn@glyndechurch.org

Cross-Cultural Coordinator

Rika Udagawa
Ph: 8365 3033
Email:
rika@glyndechurch.org

Office Contact Executive Assistant

Angeline Joimol
Ph: 8365 3033
Fax: 8365 3301
Email:
office@glyndechurch.org

@Glynde Editor...

Fleur Kupke
fleurlupke@hotmail.com

A new heart

Create in me a pure heart, O God, and renew a steadfast spirit within me (Psalm 51:10).

Read Psalm 51:1–10

Have you marvelled at the miracle of a heart transplant? The old heart is no longer operating effectively. It's worn out; without a transplant, it means death. If you were the recipient of such a transplant, you would have so much gratitude because you have been given a new chance at life.

When Jesus calls people to follow him, he spells out exactly what that means. It's challenging and can even be off-putting. How can I possibly be everything he calls me to be? Psalm 51 calls on God's unfailing love and great compassion (verse 1). The songwriter acknowledges that he falls short and lifts his eyes to a gracious God. Cleanse me, wash me clean, and 'let me hear joy and gladness' (verse 8). How would we manage if this following business was just left totally to us and our efforts? We would need to constantly ask our God to have mercy on us.

The reality is that the way we are and how we act and live out our Christian calling all depend on the state of our hearts. Actually, it all depends on the goodness of God. He's the surgeon who alone has the skill to do a heart transplant – not physically but in terms of the renewal of spirit that he can bring (verse 10). The prayer of these verses is a prayer we can pray every day of our lives. It's a matter of asking God to keep on renewing, purifying and transplanting. That's the way he works.

In the Lutheran liturgy, this verse (verse 10) is something sung just before communion. It is there that we are fed, there Jesus is shared, there we know we have forgiveness, and there where renewal is promised and given. Like a father, God cares for his children, and so, he provides for them. A disciple of Jesus knows that and depends on it. When God does his thing, then we can have joy and gladness (verse 8).

Lord Jesus, you call us to follow you. We look to you to constantly renew us, refresh us and create in us something new every day. Thank you for your unfailing love. Amen.

- **Pastor Jim Strelan**

From the editor...

The @Glynde has had many names over the years and often moved between quarterly, bimonthly and monthly publications. It began in 1955, started by Pastor Albert Zweck and entitled *The Zion Messenger*. Later it was renamed the *Glynde-Magill Lutheran* and the *Glynde-Magill Messenger* when Magill congregation was part of our parish. Originally driven and produced by the Pastor, in 1972 elders began to assist Pastor to prepare it and again the name evolved to simply *Newsletter*, then *Keeping in Touch*, *KIT Magazine* and finally in 2003 received the name @Glynde which we know it by today.

Some of our current members were instrumental in keeping the regular newsletters going including Margaret Hassold, Helene Schulz and Colleen Bradtke. Over these years our weekly Sunday Paper has also evolved thanks to the work of Barbara Mattiske and Angeline more recently. We are now able to distribute information in so many ways – the Sunday paper, facebook pages, email lists, our wayside pulpit.

I was tapped on the shoulder by Colleen 7 years ago to take over as editor of the @Glynde. At this time it was a monthly newsletter, but has gradually reduced to a quarterly publication because a lot of the information it previously contained now gets shared elsewhere. I've happily worked hard at producing this publication since then and enjoyed sharing with the Glynde community in this way. It is now my time to step down from this role and without someone to take it on, this may be the last edition of the @Glynde.

I hope you enjoy my last edition of the @Glynde, where we look at Jesus' command to 'love one another'. We have our regular contributors and also look back on the 50th Anniversary of our building. Page 19 has some insights into what is involved in editing the @Glynde if you think you may be interested.

God Bless,

Fleur Kupke

CONTENTS...	
ARTICLE	PAGE NUMBER
Devotional thought	2
From the editor...	3
From Pastor Wayne...	4-5
Pastoral Assistants @Glynde	5
From the Chairperson...	6-7
From our Cross-Cultural Coordinators	8-9
What's on in November	10-11
What's on in December	12-13
What's on in January	14-15
50 th Anniversary Celebration	16-17
Worship Calendar	18-19
What is next for @Glynde	19
Baptisms @Glynde	20



From Pastor Wayne...

*Hi! Well, this is my last "From the Pastor" for our @Glynde... I will be retiring from full-time ministry on Christmas Day, Sunday 25th December, '22. I do this with a mixture of feelings... I have very much enjoyed ministering with you for our Lord here at Glynde for over 10 years now, and I leave you with some sadness. And I face the future with a little excitement, *well more than a little*, plus some apprehension about how part-time ministry for the Lord will look...

*The theme that Fleur has chosen for this edition of @Glynde is Jesus' command to us to "love one another". Remember what Jesus said:

³⁴ And now I give you a new commandment: love one another. As I have loved you, so you must love one another. ³⁵ If you have love for one another, then everyone will know that you are my disciples." (John 13:34-35).

Jesus commands us to "love one another" just "as *he* had loved *us*". When we love one another here at Glynde, God uses each of us to care for the needs of one another, and to upbuild and encourage us in our walk with Jesus. Plus there is the wonderful picture of Christian community that presents itself to the world around us. Don't underestimate how attractive Christian community is to the people around us, as they see us loving and caring for one another... It is through our "love of one another" that people are drawn to Jesus 😊

*Have a glance at the *Worship Calendar* on the rear of this @Glynde.

A number of things are coming up in the near future: our Picnic; our call of a new pastor, and our Half-Yearly meeting on Sunday, 20th November; an Advent Lunch, *on the 2nd Sunday in Advent*, plus a time of saying "Farewell" *to our previous pastor*; preparation for Christmas; Church4Kids; Christmas Eve in the Stable, *or outside*; and Christmas Day. May God bless us as we meet together, and plan for the future, and reflect the light of Jesus to one another and others.

*This is Fleur Kupke's last edition of @Glynde as Editor. Thank you, Fleur, for all the work that you have put into producing this monthly, Bimonthly paper, *and Seasonal paper in recent times*. God bless you! In the new year, we will need a new Editor for this paper to continue... I think that it would be sad and detrimental to our ministry together not to have this periodical. My prayer is that God leads someone to take Fleur's place...

*Well, this is not me saying "Goodbye". After all, we live nearby in Klemzig, and we will be worshipping here from time to time, plus I'll be preaching on occasion as needed, plus I have offered to take mid-week Holy Communion each month *until your new pastor comes*. A new adventure awaits me in the future, as I continue to work for our Lord in part-time ministry, *wherever He calls me to be*.

*And can I finish this *my last* "From the Pastor" with my usual prayer, *a prayer that flows from our Mission Statement, and our Inreach and Outreach goals*:

"May God bless you, and us as a community of faith here at Glynde, as we encourage one another and build one another up in our faith, and as we continue to reach out in any way that we can with the life transforming good news - no, the *great* news - of God's love, and His forgiveness through Jesus".

Pastor Wayne ☺

Caring for our community

Pastoral Assistants @Glynde

What do pastoral assistants do?

Pastoral Assistants are people in our church family who are selected to help the pastor in caring and in growing our faith. They help by meeting with Pastor Wayne to share care concerns and to assist with planning worship services. Sometimes they are involved with visiting and providing Holy Communion for people who cannot come to church.

They are a friendly, 'go to' person if you or your family is sick, want to pray, or need some other help. You will be seeing a lot more of them in the next few months as we prepare for the time when Wayne has retired.

What's coming up - some changes

Pastoral Assistants are available each Sunday for you to talk to. From November 2022 a Pastoral Assistant will be rostered each month to be a contact person for pastoral care needs and to welcome visiting pastors and guest speakers each Sunday. Information will be in the Sunday paper, but also look out for them at the start and end of worship!

Pastoral Assistants are also preparing a schedule of pastors and guest speakers to help lead us in worship next year if we have a time of pastoral vacancy.

They are keen to have your support as we worship together and as we support and grow each other's faith and love for Jesus.

Meet the pastoral assistants @ Glynde

Our pastoral assistants are:

John Kupke
Lois Kupke
Barbara Mattiske
Sharyn Schubert

Helene Schulz
Judy Schulz
David Wachner





From our Chairperson...

As I have loved you, so you must love one another. By this everyone will know that you are my disciples, if you love one another (*John 13:34b,35*).

LCANZ pastor Adrian Kitson wrote a beautiful song that reflects the slogan of the church: **'Where love comes to life'**. You have most likely seen it in several different places. All official LCANZ communication bears these words. What do they mean to the church? What do they mean to you? Do the two answers match up? Actually, the only important thing to really ask is, what do these words mean to Jesus?

As we read through the account of Jesus washing the disciples' feet and giving them a new command to love one another, he provides us with the answer. Jesus himself is that answer. Jesus is the love who has come to life in the flesh at Christmas. He taught about the kingdom of God and healed many. After bearing all of our sins and shame on the cross and dying, Christ – love himself – comes to life again. 'We know and rely on the love God has for us. God is love.

Whoever lives in love lives in God, and God in them' (1 John 4:16).

You are part of the body of Christ whom Jesus commissioned to bring this love to life (Matthew 28:18–20). Whether you are young, middle-aged, or old; fit, overweight or frail; female or male; rich or poor, Jesus uses each of us as the living stones that make up a living building – the church. You, no matter how insignificant you may feel or how important you may feel, with the constant help of the Holy Spirit, are a part of Christ's mission to bring love to life in his name right where you are.

You can do this here at Glynde. Be the one to boldly and gently step out in Christ's name to be the change you want to see. Being humble, serving one another, bearing with one another in love according to the example Jesus gave at the Last Supper. We serve, teach, preach, and welcome in his name so that one day, every knee can bow, and every tongue confess that Jesus Christ is Lord.

Adapted from a devotion from Maria Rudolph. LCA Daily Devotions.

Executive & Ministry update

Pastoral Vacancy:

The call committee have now met several times to discuss potential candidates for our new pastor. We came up with a short list of possibilities, who were then contacted to ascertain their availability for a call and to go through an interview process. Last week the call committee held those interviews, and in the next week our recommendation will be announced to church members with information on that pastor distributed in preparation for the call meeting on Sunday November 20th at 1pm.

Immediately following that meeting, please stay for our half-yearly meeting, which will include our election of office bearers for 2023.

Upstairs tenancy:

With Lutheran Care vacating our premises at the beginning of September, we have been actively advertising and promoting this space. There have been a few nibbles, but nothing too advanced yet in terms of leasing this space out. We are confident of one possibility, but it could be a while yet before anything is confirmed.

Pastoral Assistants:

Recently the pastoral assistants have been meeting to review and discuss their role and goals within our church community. They are seeking to establish ways to actively communicate, lead, and contribute to the growth of our church family with a focus on:

- pastoral assistant's role and function
- communication and visibility in our church & community
- preparing for a time of pastoral vacancy

They have already been very proactive in preparing for our pastoral vacancy and you will see a much more visible presence of them in the future. I'd like to already thank them for this and also their concern and support for me as chairperson during this time.

@Glynde publication:

I'd like to acknowledge and thank Fleur Kupke, for her role as editor of this publication now for many editions. Thanks for your time, skills, and commitment to this.

As you will read in this edition, we are now seeking a new editor or co-editors. The purpose and needs of this publication may have changed over time, but we still see value in producing it, and we need a volunteer(s) to be able to continue it.

Thankyou and Farewell:

Finally, as we see out these last 2 months of 2022, we thank Pastor Wayne for his faithful service as our Pastor for just over 10 years. Also, for the years of service you have given at your previous parishes of Horsham, Grovedale, and Salisbury. Thanks for your commitment to our Lord and to ministering to all of us here at Glynde. Thanks to Jenine as well, for all your help in different ways over the years, and of course for your faithful support and care of Wayne. It is farewelling you as our pastor but not saying goodbye as I'm sure we will see you both around the place.... We wish you both God's blessings as you begin this new stage of your lives.

Tim Eckert



From our Cross-Cultural Coordinators...



Dear friends in Christ,

Rika writes: It is coming to the end of the year 2022. Looking back on all the blessings that God has given, the experience and gratitude is overwhelming. Like every year in the past, this year also had its ups and downs, but one thing which is so clear is that God's grace and mercy are new every morning. Some people come into our life, and they go. However, our Father in Heaven never leaves us alone nor forsakes us.

With our beloved Pastor Wayne retiring at the end of the year, our prayer is that this church will stand firm by the Word of God, supporting each other in love. We will not be lost sheep, but the ones lead by God who restores our soul and leads us into new ventures and challenges. Even though we might walk through tough times, we will not fear, as He is with us. (Psalm 23) We thank God for the blessings of Pastor Wayne's ministry, the example of servanthood and love that He and Jenine have shown and pray that goodness and mercy will follow them all the days of their life.

Thanks, to the support of volunteers and prayers of the congregation, we have sailed

the last term of the year smoothly. We have welcomed new faces on each day- all age groups, different nationalities and different faiths. What connects us together is the love of God, His Spirit poured out onto us through the smiles and hands of the people here at Glynde. Acceptance and love of each other can be empty words but in the mid-week community, such presence is felt in the heart. I cannot thank you enough for your participation to mid-week ministry by baking cakes for Thursday mainly music and Friday coffee and chat, giving encouraging feedback to Sharyn and me, praying for us, helping our preparation for the day and cleaning after activities etc... It might sound 'cheap', but the truth is that it is not strategies or good plans/management that is the cause of increasing numbers but the Word of God, your love, and prayers, that enables and grows this ministry.

Also, I would like to mention a unique blessing we have in mid-week that can go unrecognised. Currently there are more than a few Christians from different churches attending mid-week activities. They not only give us feedback,

but also, they are supporting us by listening to newcomers, introducing them to our activities, and giving us practical help. This interaction, together with our dedicated volunteers, unites us, giving a stronger sense of belonging and connection. Their existence might not be easily acknowledged, but I believe their work in the Lord is remembered by Him.

"Bless-belong-become-believe". This is what was talked in one of the mainly music newspapers. Decades ago, people came to church because they believed God, then they got blessing. However, nowadays, people come to church to see if Christians walk the walk as they talk the talk. They need to feel blessed (loved), feel sense of belonging, then, they can finally open their ears to hear what we say. The article was not talking about being a saint with no flaw, it was talking about living with Jesus in faith. To do so, I believe we need each other, we need to pray for one another, we need to teach one another the Word of God and more than anything, love one another as Jesus told us.

Sharyn writes: To love one another draws us to **John 15:12**: *This is my commandment, that you love one another, even as I have loved you.* The call of Jesus is to trust Him for everything we need. Believing and to love, are inseparable. God does provide opportunities at Glynde to show that love. Rika and I thank all volunteers for the support, prayers and friendships that have happened this year. The connections and relationships made, create community.

Our mid-week community has many regulars coming now and find Glynde a place of caring and feel a sense of belonging. As we speak of God's love there are those who also open up to their faith from other denominations and an increased willingness to ask for prayer. There are a number seeking to understand how being a Christian can be a better way of living.

Playgroup families are staying on for Grace Over Lunch. Each week we have a 'food for thought' message. One example of this is occurred when Mithilda demonstrated Chicken Biryani: *Some gardeners say designing herbs and spices along a garden border can help keep chickens out of the garden. Interestingly though, recipes like the one today, marinate chicken in spices. We might ask are we here by design or by chance? If we are here by design does this have an effect on how we live our lives? Does God care about His design (our created world), or does He leave us to chance? We believe we are not left by ourselves to save us, rather God's plan was in sending Jesus. Jesus helps us navigate our lives, if we allow this, so that through His design, we can live fulfilled lives.* As we go about our lives knowing who we belong to, loving one another just makes sense. Yet because we are human, forgetful and selfish, being forgiving people provides an avenue for love to stay alive. As Rika so beautifully put it: Our resource of love is so limited and fragile but love from above is always overflowing.

Sharyn Schubert and Rika Udagawa
Cross-Cultural Coordinators



Get involved at Glynde...

Sunday	Monday	Tuesday
		1 9am Exercise class 9:30 Craft and Chat 11am Pastor's bible study
6 9am Worship HC 10:30 Worship at The Gums 12:30 Korean Worship 2pm Sudanese Worship 4pm Chinese Worship	7 7pm KYB	8 9am Exercise class 9:30 Craft and chat 11am Mid-week communion 7:30pm Exec. meeting
13 9am Worship 10:30 Worship 12:30 Korean Worship 4pm Chinese Worship	14 7pm KYB	15 9am Exercise class 9:30 Craft and Chat 11am Pastor's bible study
20 9am Worship HC 10:30 Worship HC 12:30 Korean Worship 1pm Call meeting 1:30 Half-yearly meeting 2pm Sudanese Worship 4pm Chinese Worship	21	22 9am Exercise class 9:30 Craft and chat 11am Pastor's bible study 7pm Blokes' wine and cheese
27 9am Worship HC 10:30 Worship HC 12:30 Korean Worship 4pm Chinese Worship	28	29 9am Exercise class 9:30 Craft and Chat 11am Pastor's bible study

What's on in November...

Wednesday	Thursday	Friday	Saturday
2 9:30 Playgroup 11am Grace Over Lunch 7:30 Board for Ministry meeting	3 8am Prayer Group 9:45 mainly music	4 9:30 Exercise Group 9:30 English Class 9:30 KYB 10:30 Coffee & Chat 11:30 Bible Study	5 10am English Class
9 9:30 Womens' Fellowship 9:30 Playgroup 11am Grace Over Lunch	10 8am Prayer Group 9:45 mainly music 1pm Cards	11 9:30 Exercise Group 9:30 English Class 9:30 KYB 10:30 Coffee & Chat 11:30 Bible Study	12 10am English Class
16 9:30 Playgroup 11am Grace Over Lunch	17 8am Prayer Group 9:45 mainly music	18 9:30 Exercise Group 9:30 English Class 9:30 KYB 10:30 Coffee & Chat 11:30 Bible Study	19 10am English Class
23 9:30 Playgroup 11am Grace Over Lunch	24 8am Prayer Group 9:45 mainly music 1pm Cards	25 9:30 Exercise Group 9:30 English Class 10:30 Coffee & Chat 11:30 Bible Study	26 10am English Class 10-2pm Market
30 9:30 Playgroup 11am Grace Over Lunch			

Get involved at Glynde...

Sunday	Monday	Tuesday
4 9am Worship HC 10:30 Worship HC 12noon Pastor Wayne thanks 12:30 Korean Worship 2pm Sudanese Worship 4pm Chinese Worship	5	6 9am Exercise class 9:30 Craft and chat 11am Pastor's bible study
11 9am Worship 10:30 Church4Kids 12:30 Korean Worship 4pm Chinese Worship	12	13 9am Exercise class 9:30 Craft and chat 11am Mid-week communion 7:30pm Exec. meeting
18 9am Worship HC 10:30 Christmas Eve practice 12:30 Korean Worship 2pm Sudanese Worship 4pm Chinese Worship	19	20 9am Exercise class SCHOOL
25 <i>Christmas Day</i> 9am Combined Worship HC	26 <i>Boxing Day</i>	27 SCHOOL

What's on in December...

Wednesday	Thursday	Friday	Saturday
	1 8am Prayer Group 9:45 mainly music	2 9:30 Exercise Group 9:30 English Class 10:30 Coffee & Chat 11:30 Bible Study 6pm Junior Youth	3 10am English Class
7 9:30 Playgroup 11am Grace Over Lunch 7:30pm Board for Ministry	8 8am Prayer Group 9:45 mainly music 1pm Cards	9 9:30 Exercise Group 9:30 English Class 10:30 Coffee & Chat 11:30 Bible Study	10 10am English Class
14 9:30 Playgroup 11am Grace Over Lunch	15 8am Prayer Group 9:45 mainly music	16 9:30 Exercise Group 9:30 English Class 10:30 Coffee & Chat 11:30 Bible Study	17
21	22 8am Prayer Group 1pm Cards	23 9:30 Exercise Group 10:30 Coffee & Chat	24 <i>Christmas Eve</i> 7pm Christmas Eve worship
HOLIDAYS			
28	29	30	31 <i>New Year's Eve</i>
HOLIDAYS			

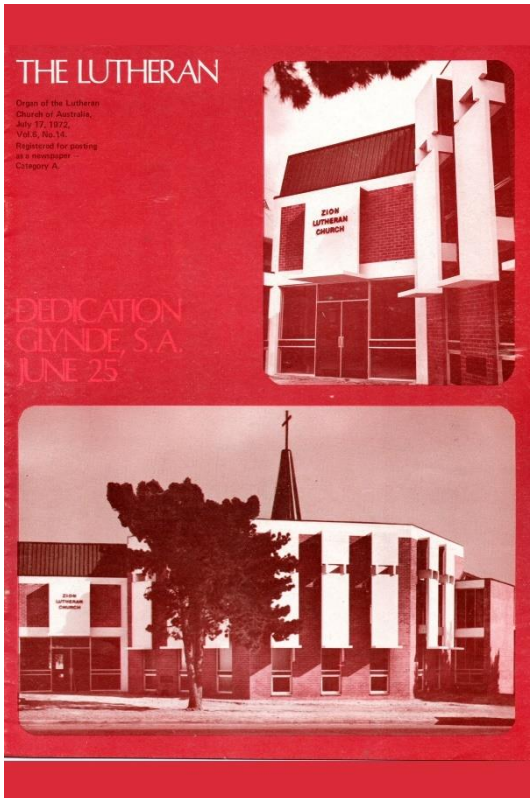
Get involved at Glynde...

Sunday	Monday	Tuesday
1 <i>New Year's Day</i> 9am Worship HC 10:30 Worship HC 12:30 Korean Worship 2pm Sudanese Worship 4pm Chinese Worship	2	3
	SCHOOL	
8 9am Worship 10:30 Worship 12:30 Korean Worship 4pm Chinese Worship	9	10
	SCHOOL	
15 9am Worship HC 10:30 Worship HC 12:30 Korean Worship 2pm Sudanese Worship 4pm Chinese Worship	16	17
	SCHOOL	
22 <i>Chinese New Year</i> 9am Worship HC 10:30 Worship HC 12:30 Korean Worship 4pm Chinese Worship	23	24
	SCHOOL	
29 9am Worship HC 10:30 Worship HC 12:30 Korean Worship 4pm Chinese Worship	30	31

What's on in January...

Wednesday	Thursday	Friday	Saturday
4	5	6	7
HOLIDAYS			
11	12	13	14
HOLIDAYS			
18	19	20	21
HOLIDAYS			
25	26	27	28
HOLIDAYS			

50th Anniversary celebration



On 26th June 2022 we celebrated and thanked God for the last 50 years during which we worshipped in this building.

But this was not the first Lutheran church building that the congregation used. The first building was dedicated on 23rd August 1925 – almost 100 years ago. That building is now part of our present hall. It is the central section. It served this small congregation for over 34 years before they extended it at both ends in 1959 to cater for the growing numbers.

As congregation numbers continued to grow, discussions were held to build a new hall. Already in 1965 the Lutheran architect Eric von Schramek submitted plans for a new building. However, this did not proceed for a number of reasons.

In December 1968 the congregation adopted the proposal of the Redevelopment Committee to build a new church building and eventually a new hall. The same architect Eric von

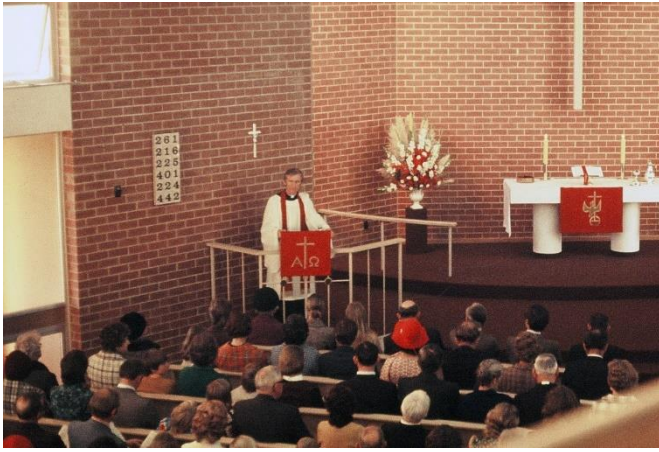
Schramek produced new plans. Over the following years they revised the plans and started a fund raising program, until finally on 15th August 1971 the foundation stone was laid by our former Pastor Albert Zweck and construction was underway.

Lyall Bishop was the Chairman of the Redevelopment Committee over the whole 4-year period, together with Ivan Hoffmann as Secretary. Regular members of the committee were: Pastor Carl Dohler, Ray Clark, John Heinrich, Lou Kaesler, Brian Kahl (Treasurer), Reg Matters, and Laurie Paech. Others recorded as committee members for shorter periods include: Keith Borgas, Bill Davies, Ivy Paech, Barry and Maxine Marschall, Thora Koehne, Mrs J Westhoff and Nelson Zweck.

The Planning Committee for the Dedication included Nelson Zweck as Chairman, Pastor Carl Dohler, Keith Borgas, Mrs Andrew Brown, Ivan and Dorothy Hoffmann, David Kaesler, Peter Kaesler, Barry Marschall, David Wachner and Eric Winter.

Of this group Barry and Maxine Marschall joined us for the anniversary celebration. And we still enjoy the presence of Ivan Hoffmann and David Wachner as our valued members. Lyall Bishop had hoped to come but was unable to be here. He sent his greetings. Mrs Elsa Dohler and Matt Bishop also sent greetings and reminiscences.

Dedication day was Sunday 25th June 1972. The architect, Mr Eric von Schramek, handed the key to Pastor Les Grope, the SA District President, who opened the doors in the name of the Triune God. Senator Condor Laucke unveiled the memorial plaque "in memory of those who served and gave their lives in war". Guests, visitors and members then entered the new church – just over 1000 people.

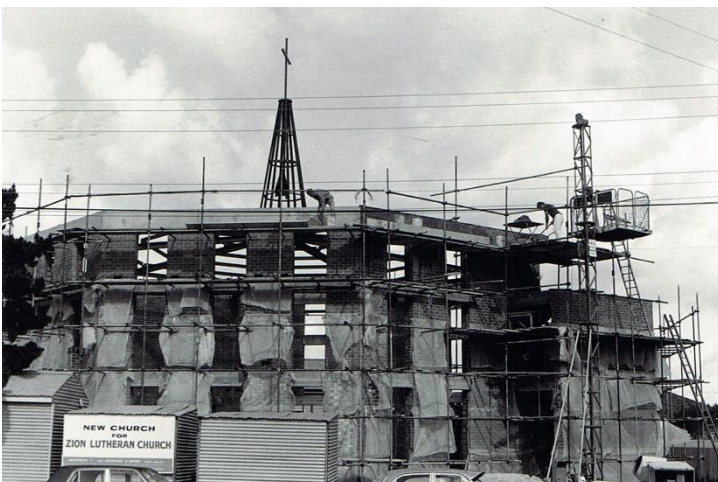
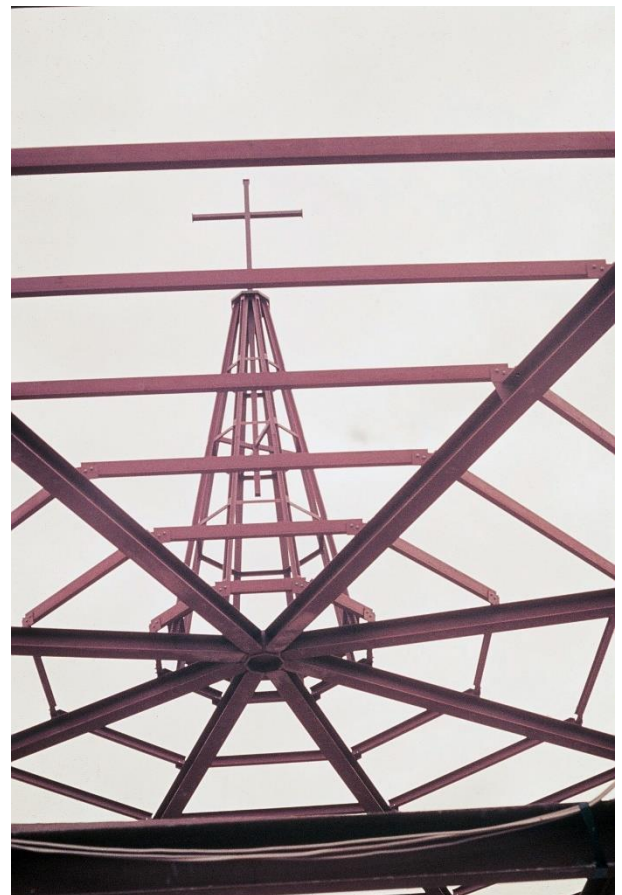


Former Pastor Harry Wendt addressed the congregation. The choirs of Zion Glynde and Pilgrim Magill sang. In the evening a choral service was held for a packed church, at which Pastor Paul Zweck, son of the congregation, delivered the address.

The congregation chairman Ray Clark later acknowledged the large amount of voluntary work contributed by members which had saved them a lot of money – particularly in preparing the site beforehand.

The design of the church was in the modernist style that was prominent in Adelaide in the 1950s, 60s and 70s. The architect Eric von Schramek was later knighted for his contribution to architecture in South Australia. He designed many churches and multi-storey city buildings throughout Australia and Papua New Guinea. A book with his reminiscences and his churches is available.

God has richly blessed our congregation at Glynde in the past, through this building. We pray for his continued blessing. Please support our 50th Anniversary Appeal as a thank offering.



Worship Calendar

NOVEMBER

6.	9.00 a.m.	H.C.	Pentecost 22	Luke 10:25-37 "How does God want me to live the rest of my life"	<i>The Big Questions (4)</i>
	10.30 a.m.		<i>Picnic service at "The Gums" followed by lunch and games: a Multicultural event (together with TTG) Leader: *Baptism of Georgia Freund at 9 a.m. service</i>		
13.	9.00 a.m.		Pentecost 23	1 Peter 1:3-5 "What will happen when I die?"	<i>The Big Questions (5)</i>
	10.30 a.m.	H.C.	<i>*Baptism of Hudson Schroeder</i>		
20.	9.00 a.m.	H.C.	Pentecost 24	Revelation 21:1-5 "What will heaven be like?"	<i>The Big Questions (6)</i>
	10.30 a.m.	H.C.	<i>Baptism of Elana Belag</i>		
27.	9.00 a.m.	H.C.	Advent 1	1 John 4:9-10	<i>God's Christmas gift (1)</i>
	10.30 a.m.	H.C.	"God's Christmas gift: given to say, "I love you!"		

DECEMBER

			Advent 2	Luke 1:31 (cf. Matt. 1:21)	God's Christmas gift (2)
4.	9.00 a.m.	H.C.		"God's Christmas gift:	
	10.30 a.m.	H.C.	Leader:	given that we may have peace "	
	12.00 noon		Advent Community Lunch: Farewell to Pastor		
			<i>*Baptismal Anniversaries (Oct-Dec)</i>		
			Advent 3	Luke 2:8-13	God's Christmas gift (3)
11.	9.00 a.m.			"God's Christmas gift:	
	10.30 a.m.		Church 4 Kids	given that we may have joy "	
			<i>(Intergenerational Sunday)</i>		
			Readings and Carols		
			Advent 4	Galatians 4:4-7	God's Christmas gift (4)
18.	9.00 a.m.	H.C.	(Combined)	"God's Christmas gift:	
	10.30 a.m.		Christmas Eve practice	given so that you may have hope "	
			<i>*School holidays start</i>		
	(Saturday)		Christmas Eve in the stable		
24.	7.00 p.m.		*Family decorating the Christmas tree, & explaining symbols: angel, donkey, Nativity scene, sheep, star		
			Family worship, <i>with children</i>		

			Christmas Day
	(Sunday)		Luke 2:1-20
25.	9.00 a.m.	H.C. (Combined)	"What's Christmas all about!?"

JANUARY '23

			Christmas 1	Matthew 2:13-23
1.	9.00 a.m.	H.C.		"The escape to Egypt"
	10.30 a.m.	H.C.		
			<i>*No Community Lunch</i>	
			Epiphany 1	Matthew 3:13-17
8.	9.00 a.m.	.		"The baptism of Jesus"
	10.30 a.m.	.		
			Epiphany 2	John 1:29-32
15.	9.00 a.m.	H.C.		"Behold, the Lamb of God"
	10.30 a.m.	H.C.		
			Epiphany 3	Matthew 4:12-23
22.	9.00 a.m.	H.C.		"Jesus begins his work in Galilee"
	10.30 a.m.	H.C.		
			Epiphany 4	Matthew 5:1-12
29.	9.00 a.m.	H.C.		"Blessed are those who..."
	10.30 a.m.	H.C.		
			<i>*Before Prayers: Blessing of all students and teachers</i>	
			<i>*School resumes on 30/1</i>	

Are you the next @Glynde Editor?

The @Glynde needs a new editor, otherwise its publication will unfortunately come to an end.

Each edition takes approximately 20 hours to prepare and complete. Currently we are publishing an edition every season (4 per year).

Editing involves:

- Deciding on a theme and emailing contributors for their articles – approximately 2 hours
- Formatting/editing the articles as they arrive and compiling the edition – approximately 15 hours
- Printing the copies and placing in pigeon holes – approximately 2 hours
- Drafting and sending out the email version to our mailing list – Approximately 1 hour

Please contact Tim Eckert if you are interested in volunteering in this way.



Baptisms @ Glynde!

